

York Monitor

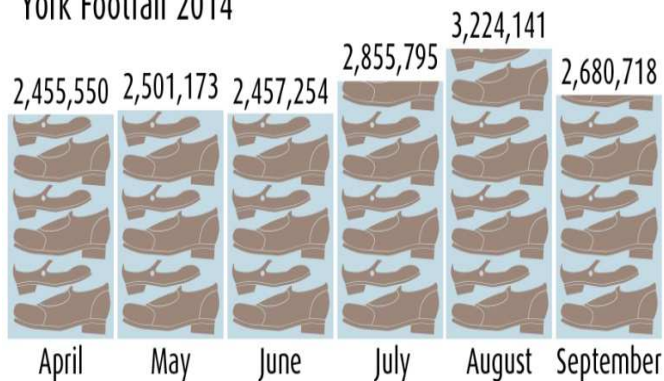


Quarter 2 Update 2014 – 2015

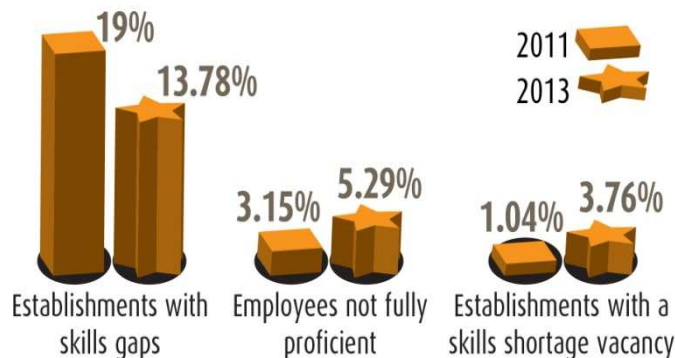
ANNEX 1

Create Jobs and Grow the Economy

York Footfall 2014



Skills gaps and shortages



Create Employment

The number of Job Seekers Allowance claimants has fallen to 1% from 1.2% in Q1 and is below national and regional averages of 2.2% and 2.9% respectively. However, York has a higher proportion of part time workers than both regional and national averages at 33.2%, compared with 26.3% and 25.3% respectively.

The 5th jobs fair held at York Railway Institute in September attracted 1,023 residents looking for jobs and career advice. The event, which was organised through partnerships between the Council, York Learning, Job Centre Plus and Learning City York sought to bring together employers to offer advice and the chance to speak face to face to businesses about real employment opportunities in the city.

Older People in Employment

The Council's Economic Inclusion Fund has been used to commission the Experience Work 50+ programme designed to help older people into work. The pension age for women is increasing to 65 in 2018 and 66 for all in 2020 meaning people will either choose or need to stay in work for longer. 92 people have completed the programme and 36.6% have gained employment, are self employed or gone on to further training.

Supporting Businesses

York has received funding through the Leeds City Region and York, North Yorkshire & East Riding Enterprise Partnerships, including £26m through the Local Growth Fund, £400k through the Business Growth Fund, and potential further resource through the £1bn West Yorkshire + Transport Fund. Within the last quarter two successful bids have been made through the North Yorkshire Local Enterprise Partnership Business Growth Programme: First Steps Day Nursery were awarded £40,000, and Monk Bridge Construction Company were awarded £90,000. Including these there have now been 13 successful bids across both LEPS with £2.3 million total spend, £400k total grant and 71 jobs.

Supporting young People with high support needs into Employment

The Route to Success Training Programme for Young People includes providing support to those with high support needs to gain employment. This programme has been successful with 30 students completing and 15 of those being High Support Needs learners. Performance is expected to increase in the 2014/15 academic year, with 22 High Needs Support students recruited so far.

Focus on Pop Up Cafes

City of York Council and Business Inspired Growth have worked together to deliver two 'pop up' business support and advice events:

- Your Bike Shed on 13th August
- Exhibition Hotel on 18th September

At each event there were a number of local business experts on hand to offer free business advice on topics ranging from social media to tax and accountancy. The sessions were held in an informal style with businesses choosing which topics they would like to discuss and then given timeslots with their relevant experts.

Feedback from businesses has been positive and the Council aim to follow up on business progress to evaluate the success of these events.

More information on pop up cafes can be found at the link below:

<http://youtu.be/nUIkB8HoUyw>

High Speed Rail Developments

There has been significant national investment announcements and plans around rail in recent months, providing sizeable opportunities for York and its strong rail sector over the next few decades. September saw the announcement that the proposed national high speed rail college is coming to Yorkshire, with Doncaster selected to co-host the training centre with Birmingham. After York missed out on its bid to host the college, the city backed Doncaster's bid to train at least 2,000 apprentices for the planned HS2 project, and will be working with Doncaster closely in 2015 to ensure help shape the curriculum appropriately for York-based employers. High Speed 2 and High Speed 3 proposals continue to develop, with intense lobbying from various cities and regions. York specifically has been championing investment which will benefit the city through the East Coast Mainline Authorities and Connected Cities group at party conferences; as well as directly with government. Finally, Rail North, a body taking forward a collective approach to rail in the North, shortlisted bidders for the running for current Northern and Transpennine franchises. Over the next 5 years more than £1 billion will be spent on the rail network in the north.

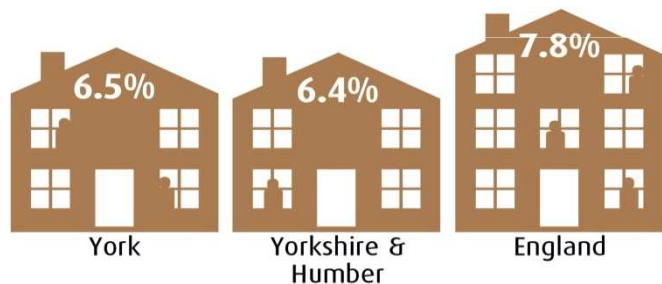
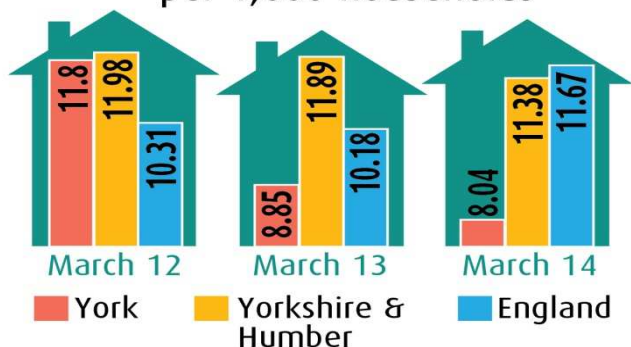
ANNEX 1

Looking Ahead... To create jobs and grow the economy the Council will:

- Set up marketing & business development agency for the city to work with the private sector to bring economic growth.
- Deliver key projects including York Central, York BioHub, and Skills capital through Askham Bryan. These are funded through the Local Growth Fund for the Leeds City Region and York, North Yorkshire and East Riding Local Enterprise Partnerships.
- Host access to finance/business support events:
 - Manufacturing Match – 07/10/14
 - Growth Accelerator – 16/10/14
- Deliver Living Wage Week Events in November for large and small businesses to discuss becoming accredited and paying the Living Wage.
- Hold a conference for city businesses in November, with a range of activities providing advice and support to business. Speakers include: Sir Stuart Rose (Chief executive of Ocado), Martin Van de Weyer (Business Editor, Spectator) and other local entrepreneurs. This will be linked to activity around Global Entrepreneurship week.

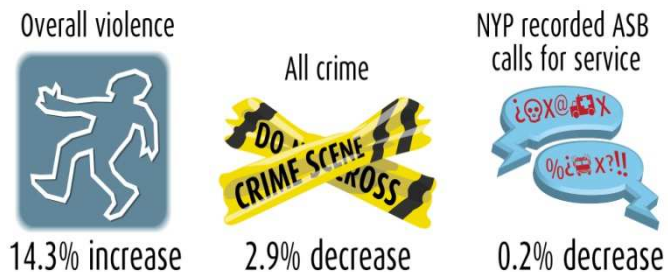
Build Strong Communities

Homelessness prevention and relief per 1,000 households



Projected Increase in the number of Households (2013 - 2021)

Crime incidents 2013/14 to 2014/15



Deliver a community stadium including a county standard athletics facility

Greenwich Leisure Ltd (the UK's largest leisure centre operator) is leading the consortium named as the preferred bidder to deliver the 8,000 all-seater York Community Stadium & Leisure Complex and run the council's existing leisure centres at Yearsley Pool and Energise.

Support community groups to take greater ownership of the management and operation of parks and green spaces

Between July and September, the Smarter York team worked on 29 community schemes including the community running of Rowntree Park summer fair, the construction of phase 2 of the Rawcliffe Country Park bike track and awarding the contract for the refurbishment of the Cornlands Play Area with Cornlands and Lowfields Residents Association.

Increasing Affordable Housing

Affordable Home construction has fallen from 151 in 2011/12 to 50 in 2013/14. Negotiations between the Council, York Housing Assoc., land owners and Homes & Community Agency has resulted in Jubilee Court, a £2 million, 18 home affordable housing development in Elvington.

Focus on Tackling Loneliness and Social Isolation

The Joseph Rowntree Foundation has undertaken research in York on how to reduce loneliness and social isolation. Research found that the main causes of loneliness were due to ageing, family issues, not knowing neighbours, a lack of community facilities and chances to get involved with the community.

A free resource pack providing ideas on how to tackle loneliness is now available at the link below:

<http://www.jrf.org.uk/publications/loneliness-resource-packrk.gov.uk>

York's Lidgett Grove Methodist Church established a successful Community Café offering company and activities. The Café was initially started as a pilot project but following it's support and usage work is now underway to develop the facility into a Community Hub.

Consult on the draft local plan that sets out how York's housing needs will be met up to 2030

In line with the government's 2012 National Planning Policy Framework, a draft Local Plan was agreed by Cabinet on 25 September. Public Consultation is on hold while further work is carried out to comply with a motion submitted at Full Council in October. Currently, proposals include:

- 20 employment sites for future development, for example York Central
- Approximate £300m investment in transport infrastructure to deliver York's growth ambition

Council Homes and Housing Services

The Council's Housing and Building Services team have achieved the Government Standard for Customer Service Excellence following an independent review. The 2013/14 Tenant and Leaseholder Report showed 86.9% overall satisfaction rate with services. Council tenant arrears increased to 2.3% of annual due rents in Q2. However, as the past 3 years figures range from 1.3 – 1.6% this should improve over the remainder of the year.

Raise standards in the private rented sector

99 landlords have registered nearly 400 homes with the council's private landlord accreditation scheme 'YorProperty'. 49 landlord members have taken up the scheme's core management and property standards training and only one of seven property inspections has needed further action to meet the standards set.

Community Safety

A Summer Safety campaign was launched in July centred around the 'Plan Safe, Drink Safe, Home Safe' campaign developed by the University of York St. John Students' Union. Measures included bus, mobile screen and poster advertising campaigns and distribution of beer mats to riverside venues.

Violent crime in the Cumulative Impact Zone, an area covering a large part of the city centre, is forecast to reduce by 6.8%. However, Violent crime associated with alcohol outside the city centre continues to slowly rise.

Reported Domestic Violence in York is currently on course to reduce by 1%. The Domestic Abuse Early Intervention Project has been receiving referrals from the Police since February. The Early Intervention Worker has been vetted and now has direct access to Police systems.

ANNEX 1

Looking Ahead... To build strong communities the Council will:

- Deliver a community stadium including a county standard athletics facility
- Support community groups to take greater ownership of the management and operation of parks and green spaces
- Through the 'Rewiring' programme the Council will develop community hubs where we can work in partnership with local communities at a neighbourhood level
- Raise standards in the private rented sector and continue to tackle homelessness through a sustained focus on early intervention and prevention
- Deliver the Community Learning Strategy and expand opportunities available to residents to promote health and wellbeing, including the development of a pilot programme focusing on living with dementia

Get York Moving

Bus journeys

Passengers per head of population (2013)



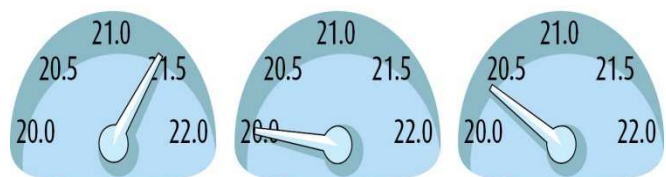
York



Yorkshire & Humber



England



Average vehicle speeds - York

Complete the Access York Project

Two new Park and Ride sites (Askham Bar and Poppleton Bar) opened on 8 June 2014 with parking capacity increased by 30% to 5,500 spaces. Associated Highway improvement works at the A59/A1237 junction were completed in August 2014. All A roads into the city are now covered by a Park & Ride option for travellers. Additional funding for further expansion is being sourced via the West Yorkshire plus Transport Fund.

Deliver Better Bus Area Funded schemes such as Exhibition Square

City Centre bus interchange facilities have been upgraded through Better Bus Area Funding at Piccadilly, Stonebow and the Station. The upgrade of the facilities at Exhibition Square, which handles around 750,000 passenger journeys a year, commenced in September with completion expected in November. Further improvements in Rougier Street have been delayed by the slower than anticipated progress of the redevelopment of Roman House St but should be in place in 2015.

Complete 20mph speed limit programme for residential areas across the city

The South Bank pilot project has been completed and its success continues to be monitored. City wide roll out is now underway and the completion of the West of York means a third of the City is now covered.

City wide progress is slower than expected as the programme has been addressing local concerns, but schemes in North and East York are due to be completed in 2014/15.

Transport Network

The condition of the Road and Pathway network has been relatively stable over the past 3 years, 16% of roads and 4% of paths were rated as poor condition in 2013/14 a rise and fall of 1% point respectively from 2012/13. Principal roads are in better condition than smaller ones, although even unclassified routes where maintenance should be considered, at 10%, is better than national and regional averages of 17%.

Focus on Cycling

The 'Cycle Yorkshire – Ride the Routes' mobile phone app has been selected as a finalist in the 'Digital Community Pioneer of the year' category of the Digital Entrepreneur Awards 2014.

York's iTravel programme led the development of the app on behalf of the Road Safety Partnership across Yorkshire & Humber. The free app, which was launched in March this year has already been downloaded over 4,000 times and is backed by Welcome to Yorkshire.

The app includes information for riders who want to follow in the tracks of both Yorkshire stages of 'Le Tour'. It incorporates flyover scenic maps of the routes, as well as videos of York based semi-pro cyclist Jamie Sharp, tackling some of the most challenging sections.

The app can be downloaded for Apple and Android devices at the link below or by searching the Google or Apple stores for 'Cycle Yorkshire':

<http://bit.ly/cycleyorkshire>

Traffic

People issued Penalty Charge Notices (PCNs) in relation to the trial traffic regulation of Lendal Bridge can now apply for refunds online through the Council's website until the end of the year. The Council's website will be updated monthly with the number of PCNs repaid and the council will publish the total cost of the Lendal Bridge settlement process after Wednesday 31st December.

Improving Movement in the City Centre

Following the success of the experimental Foot streets hours identified through the Foot streets Review, the revised Foot streets hours have now become permanent (10:30 to 17:00). The possible expansion of foot streets to additional areas continues to be investigated.

Develop York's Cycling and Pedestrian Network

The critical element of the Haxby Road to Clifton Moor Cycle route, the bridge over the Scarborough railway line, will be constructed in autumn 2014 with the full route completed early in 2015.

Phase 1 of the Knapton to Rufforth Cycle Route will be completed in 2014/15 with Phase 2 and 3 (a link to Rufforth then Knapton) to be developed in future years.

ANNEX 1

Looking Ahead... To get York moving in 2014/15 the Council will:

- Complete the Access York Project which increases the capacity of the service by 30% (2 New Park & Ride sites and the upgrade of the A59/A1237 roundabout).
- Develop York's Cycling and Pedestrian Network, inc. the Haxby Road to Clifton Moor Cycle Route
- Complete 20mph speed limit programme for residential areas across the city
- Deliver Better Bus Area Funded schemes such as Exhibition Square, Capacity enhancements to Clarence Street/Lord Mayors Walk junction, Museum Street bus shelter, and new shelter in Rougier Street
- Work with the West Yorkshire plus Transport Fund to deliver infrastructure improvements in the city including the completion of the first stages of the Outer Ring Road upgrade study, commencement of detailed design of the A1237 roundabout improvements and review of the station frontage to reduce the conflict between users and improve the interface between modes